



DIVISION OF
Environmental Health

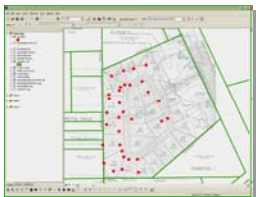
Geographic Information Systems
measure. manage. model. map.

1



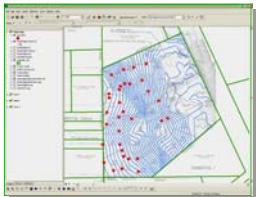
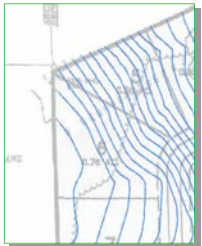
measure: spatially
reference plat data

2



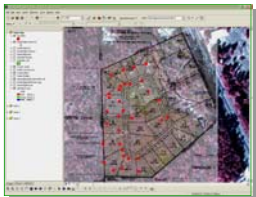
measure: capture
field and GPS data

3



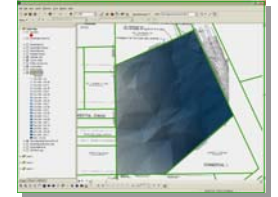
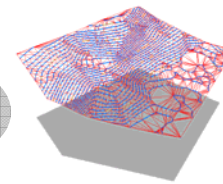
measure: digitize
elevation data

4



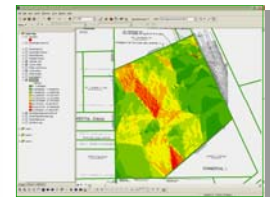
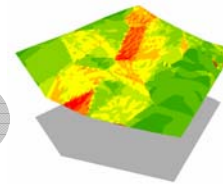
manage: data in
spatial database

5



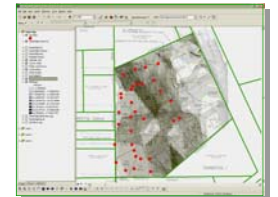
model: derive surface
from elevation

6



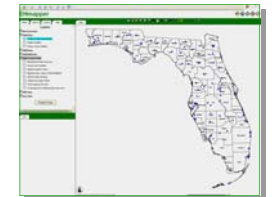
model: analyze
slope from surface

7

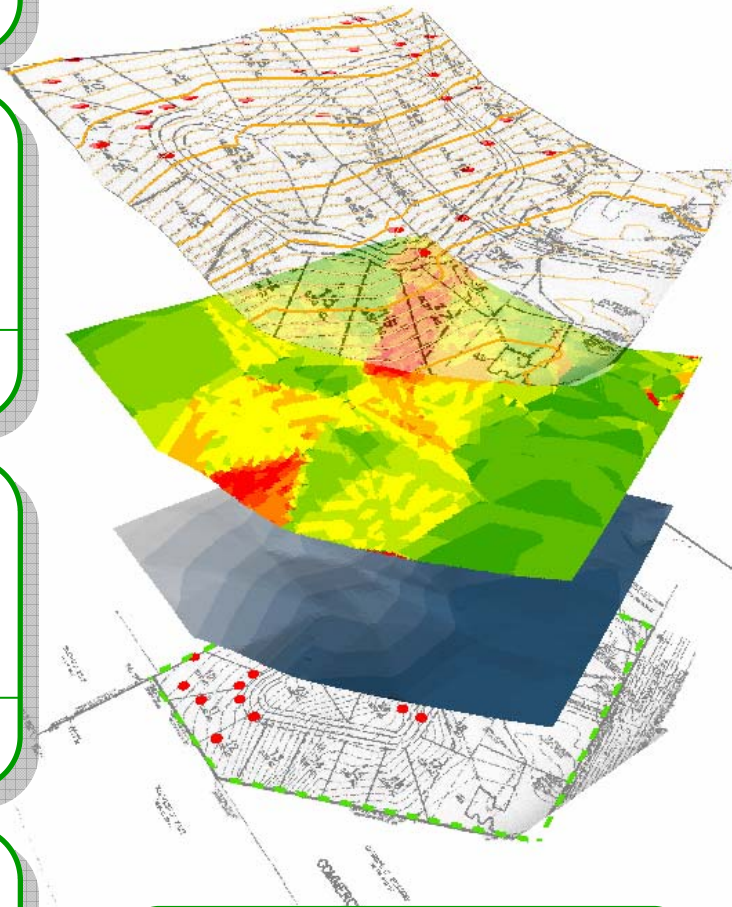


map: publish map
information product

8



map: distribute
and share data



Bureau of Onsite Sewage Systems

The steps illustrate the real-world application of GIS to an Environmental Health issue in Gadsden County. The end result information products include maps depicting the location of septic drain fields in severely sloped terrain, areas in which raw sewage has surfaced. The County Health Department can use the spatial analyses and these information products to communicate with other County officials, local developers, and the public.